

Blue's Professional

The active assistant for monitoring your telephone traffic and reducing the phone bill of your Company.

Statistics and monitoring in real time

With **Blue's Professional** you can easily analyse your telephone traffic using real time statistics and call monitor, or preconfigured and ready-to-use charts and tables.

With the practical call dashboard you can select the statistics according to the analysis target and customise them as you like with a single click or export them to other applications (PDF, HTM, XLS, DOC...).

Easy to use

With **Blue's Professional**, find the information you need at a glance and ready to use.

With a single click, you can find out and keep under control your monthly expense, the most talkactiv extensions, incoming and outgoing calls, if you had any missed call, how many rings are needed before incoming calls are answered, how much you would have spent with a different telephone carrier, and much more.



Find out how to save and improve your efficiency thanks to Blue's Professional.

- Exactly know how much and how your are spending
- Analyse department and cost center breakdown
- Be timely warned in case of telephone abuse and frauds
- Monitor assigned budgets
- Measure the average answer time for your Clients
- Find out your missed calls

Statistics and ranks ready for your needs

Blue's Professional manages your company incoming and outgoing calls and organises the statistics, sorting them by objective.

A call dashboard offering general reports, telephone traffic totals sorted by seat, department and extension, call list, cost analysis grouped in several ways, analysis of the incoming call efficiency and other ranks are just a few of the reports shown in real time that can be exported into different formats (PDF, Excel, Word, HTML, etc.)

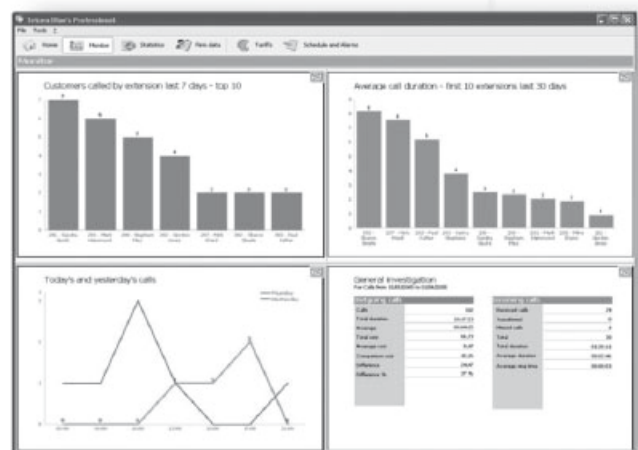
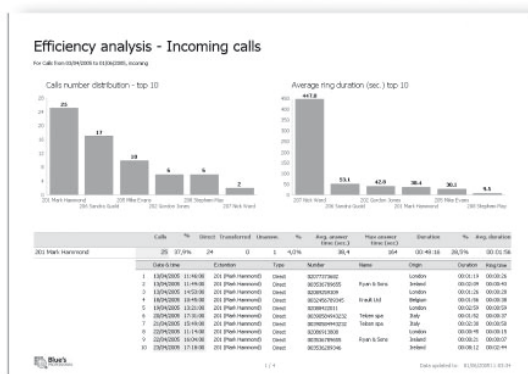
Does not require a dedicated PC

Blue's Professional does not require a dedicated PC and, while it runs, you can continue using your everyday software.

Easy carrier management

Blue's Professional is multi-carrier, you can easily manage your telephone carriers (updateable via the internet) for an accurate cost calculation.

You can also work out a comparison among several offers, to find out the best traff for your company, deciding upon a statistic on your real telephone habits.



Calculates the costs of any telephone carrier

Thanks to the multi-carrier management, Blue's Professional calculates the cost of your phone calls using several carriers simultaneously.

You can manage any traffic of any telephone carrier and print those ones in use.

Tariff editing and update will be easy using the tariff manager tool or downloading them directly from our website www.telcen.it.

Blue's Professional Multisite: dedicated to multisite environments

Blue's Professional is also available in multisite editions for multisite editions for multisite offices where PBX even of different makes.

Blue's Enterprise 4: top class control

If you are looking for top class performances and control, offices with more than 100 extensions can take advantage from Blue's Enterprise 4 offering a wonderful Web Interface and advanced tools for the integration with company applications and databases.

Blue's Professional requirements

1,6 Ghz processor, 1 GB RAM, 300 MB free disk space, MS-Windows 2000 (sp4), XP Professional, Windows 2003 Srv, Vista Business-Ultimate, VMware

Blue's Professional is available in 5 languages: ITA, ENG, FRA, DEU, ESP.